



Total Solution Provider in Saw Device

SL07540AV

75.0 MHz IF SAW Filter
40.32 MHz Bandwidth
Revision 0: 5. August. 2008



- Electrical Characteristics
 - Package Dimensions
 - Testing Environment
 - Frequency Characteristics
-

SAWNICS Inc.

460 Cheonheung-ri, Seonggeo-eup, Cheonan-si, Chungcheongnam-do, 330-836 / Korea.
Tel: +82 41 550 9372 / Fax: +82 41 550 9399 / www.sawnics.com

□ Electrical Characteristics

Maximum Ratings

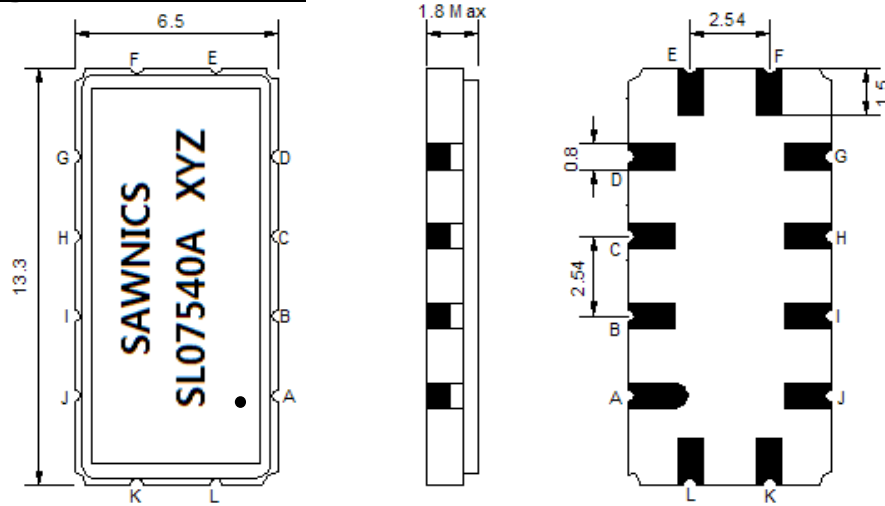
Parameters Description	Unit	Minimum	Typical	Maximum
Operation Temperature Range	°C	-	25	-
Storage Temperature Range	°C	-40	-	85
Maximum DC Voltage	V	-	-	10
Maximum Input Power	dBm	-	-	10
Source Impedance (single ended) ⁽¹⁾	Ω	-	50	-
Load Impedance (single ended) ⁽¹⁾	Ω	-	50	-
Package type & size	V			
Length x Width	mm ²	-	13.3 x 6.5	-
Height	mm	-	-	1.8

Electrical Specification

Parameters Description	Unit	Minimum	Typical	Maximum
Center Frequency (Fo)	MHz	-	75.0	-
Insertion Loss at Fo	dB	-	22.50	24.00
Group Delay Variation at Fo ± 19.40 MHz	nsec	-	20	50
Absolute Delay at Fo	usec	-	1.21	-
Passband Ripple Variation at Fo ± 19.40 MHz	dB	-	0.5	0.95
Bandwidth at -1dB	MHz	-	40.32	-
Bandwidth at -3dB	MHz	40.80	41.25	-
Bandwidth at -20dB	MHz	-	43.60	44.00
Bandwidth at -40dB	MHz	-	44.60	45.00
Ultimate Rejection	dB	40	45	-
Temperature Coefficient	ppm/°C	-	-86	-

Notes : (1) With Matching Network (Ref. Testing Environment Circuit as shown below).
Those impedances could be modified with different impedance values and/or structures, if necessary.

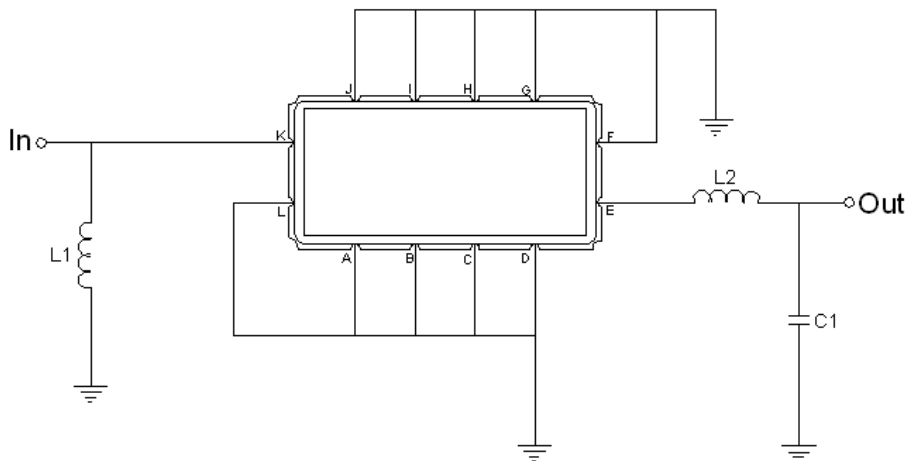
Package Dimensions



- ① SAWNICS: Brand
- ② SL07540A: Model Name
- ③ X : Date Code (Year)
- ④ Y : Date Code (Month)
- ⑤ Z : Date Code (Date)
- : Index Dot

Pin Description	
A, B, C, D, F, G, H, I, J, L	Ground
K	Input
E	Output

Testing Environment



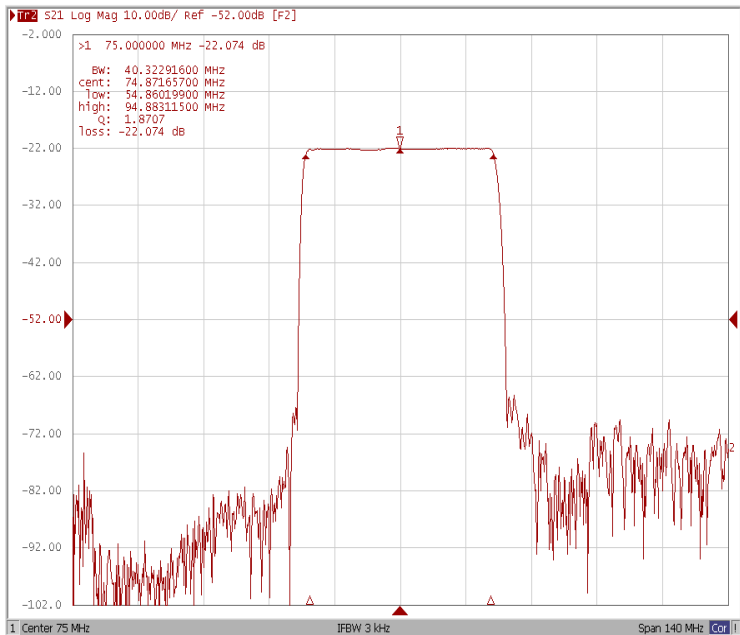
Test Fixture & Values	
Input	L1 = 68 nH
Output	L2 = 100 nH , C1 = 4.7 pF
Source/Load Impedance	50 Ω



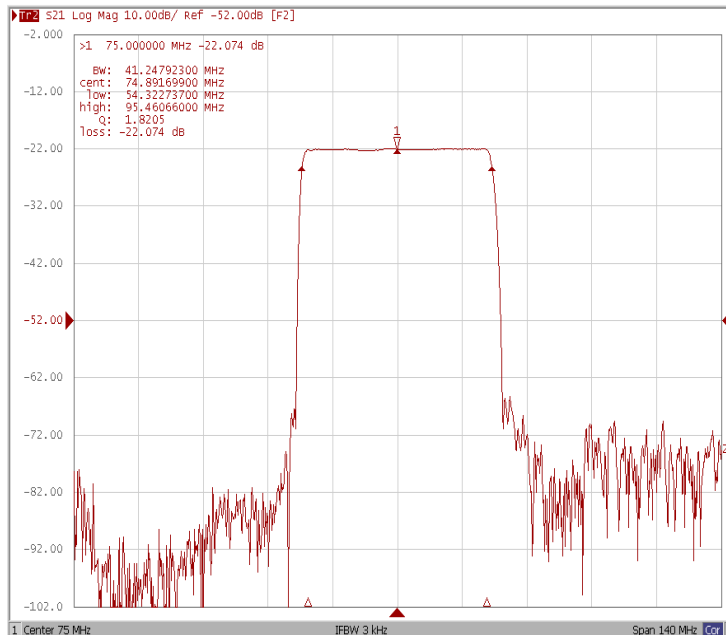
Frequency Characteristics

Frequency Response

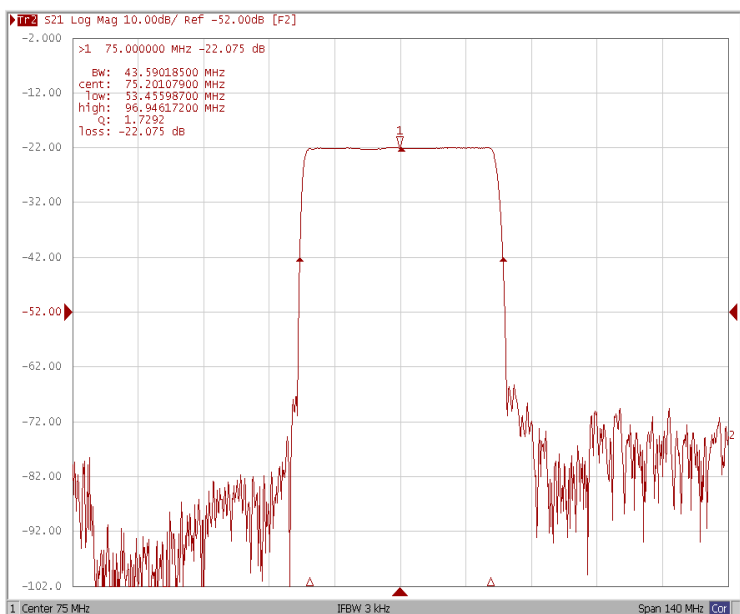
Bandwidth at -1.0 dB



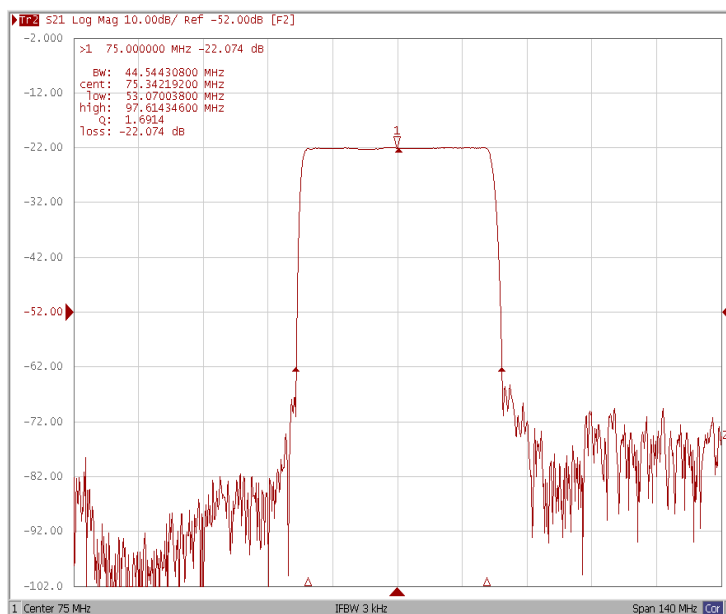
Bandwidth at -3.0 dB



Bandwidth at -20.0 dB



Bandwidth at -40.0 dB

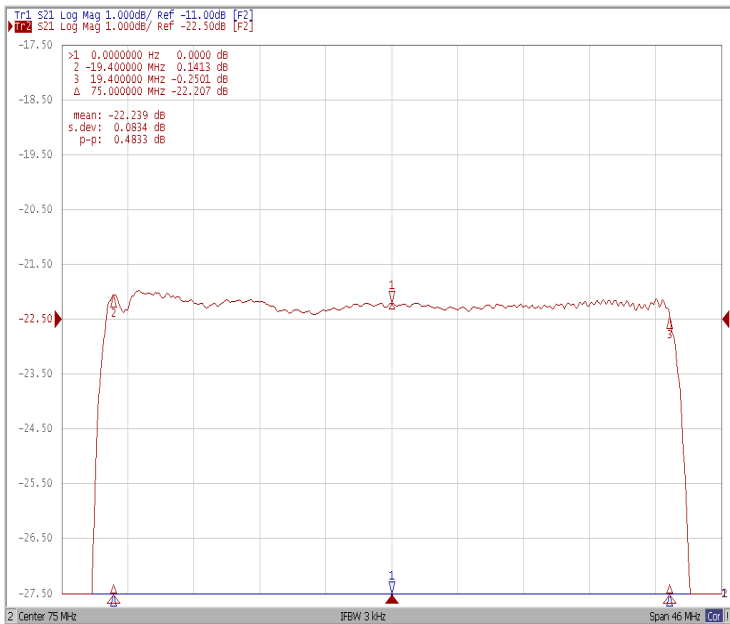




Frequency Characteristics

Frequency Response

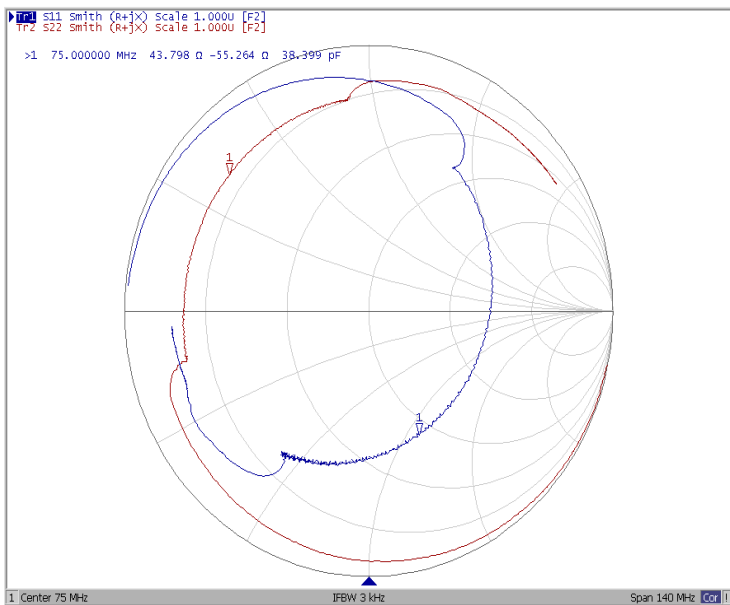
Ripple Variation Fo±19.40MHz



Group Delay Variation Fo±19.40MHz



Smith Chart



VSWR

